

FROM THE DESK OF:

REVEREND BILL ROSCOE
PRESIDENT/CEO

PO Box 1494
Boise, ID 83701
(208) 343-2389

BoiseRM.org



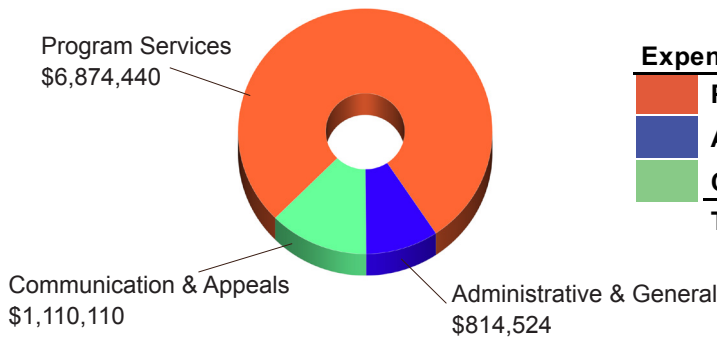
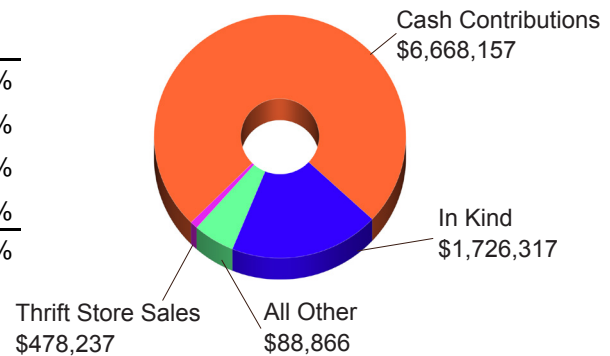
BOISE RESCUE MISSION
MINISTRIES

FY 2017-18 ANNUAL FINANCIAL REPORT

The generous supporters of Boise Rescue Mission Ministries are making a critical, life-changing difference in the lives of homeless and hungry men, women, and children throughout the Treasure Valley. It often starts with the simplest act of kindness -- shelter from the cold or a meal served to someone who is hungry -- but the impact reaches so much farther. Because of our donors and volunteers, people experiencing the worst circumstances in their lives are getting jobs, overcoming addictions, thriving in school, finding homes for their families, restoring broken relationships, and finding the hope they need for a better future. In 2018, with the help of the Rescue Mission, more than 650 moved out of our shelters into a place they could call home. Because of the help they received from us, they are able to say, "I am no longer homeless!" Thank you for partnering with us to restore Faith, Hope and Family across the Treasure Valley.

Support and Revenue:

Cash Contributions	\$ 6,668,157.00	75%
In Kind	\$ 1,726,317.00	19%
Thrift Store Sales	\$ 478,237.00	5%
All Other	\$ 88,866.00	1%
Total Support and Revenue	\$ 8,961,577.00	100%



Expense:

Program Services	\$ 6,874,440.00	78%
Administrative & General	\$ 814,524.00	9%
Communication & Appeals	\$ 1,110,110.00	13%
Total Expense	\$ 8,799,074.00	100%

LEADERSHIP

Rev. Bill Roscoe
President/CEO

Jean Lockhart
Chief Operating Officer

Sarah Zimik
Chief Development Officer

Jason Billester
Vice-President of Development

BOARD OF DIRECTORS

Sandra Dalton, Chair
William Laska, Vice-Chair
Ron Freeman, Secretary
Don Anderson, Treasurer
Vikki Chandler

Peter Crabb
Kent Conrad
Greg Brown
Tom Wilford

Don Brandt, Emeritus
Dave Hills, Emeritus
Gerald Salisbury, Emeritus
Harold Thomas, Emeritus

Lives Impacted!

Meals Served:
362,118

Safely Sheltered:
169,815

Clothing Given Away:
78,203

Chapel Attendance:
17,968

CITY LIGHT HOME FOR WOMEN & CHILDREN ✦ RIVER OF LIFE RESCUE MISSION ✦ MINISTRY CENTER ✦ RECOVERY LODGE
LIGHTHOUSE RESCUE MISSION ✦ VALLEY WOMEN & CHILDREN'S SHELTER ✦ THE RESCUE MISSION THRIFT STORE

RESTORING FAITH, HOPE & FAMILY ACROSS THE
TREASURE VALLEY SINCE 1958



CITYGATE MISSION
NETWORK MEMBER

BOISE RESCUE MISSION, INC.
STATEMENTS OF FINANCIAL POSITION
September 30, 2018
With Comparative Totals as of September 30, 2017

	<u>2018</u>	<u>2017</u>
ASSETS		
Current Assets		
Cash and cash equivalents	\$ 1,062,695	\$ 950,109
Prepaid expenses and other assets	128,842	121,092
Inventory	<u>405,335</u>	<u>257,944</u>
Total Current Assets	1,596,872	1,329,145
Non-Current Assets		
Property and equipment, net	8,603,448	8,735,447
Property and other assets held for sale	12,814	5,940
Security deposits	<u>10,446</u>	<u>10,446</u>
Total Assets	<u>\$ 10,223,580</u>	<u>\$ 10,080,978</u>
LIABILITIES AND NET ASSETS		
Liabilities		
Accounts payable	\$ 49,766	\$ 10,721
Accrued payroll and related liabilities	142,840	134,361
Guest savings	6,305	8,135
Current portion long term debt	<u>58,459</u>	<u>56,316</u>
Total Current Liabilities	257,370	209,533
Long-Term Liabilities		
Long-term debt, net of current portion	462,830	522,882
Deferred rent	<u>15,185</u>	<u>22,871</u>
Total Liabilities	735,385	755,286
Net Assets		
Unrestricted		
Board designated	100,000	100,000
Undesignated	<u>9,072,722</u>	<u>8,792,773</u>
Total Unrestricted	9,172,722	8,892,773
Temporarily restricted	<u>315,473</u>	<u>432,919</u>
Total Net Assets	<u>9,488,195</u>	<u>9,325,692</u>
Total Liabilities and Net Assets	<u>\$ 10,223,580</u>	<u>\$ 10,080,978</u>