

## We Are Here to Help!

(Women & children only)

### MEAL TIMES

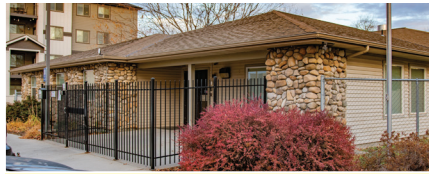
**Breakfast** – overnight guests only  
6:00 a.m. (Daily)

**Lunch** – overnight guests only  
12:00 p.m.

**Dinner** – 6:00 p.m.

### OVERNIGHT SHELTER

**Check in** – 4:00 p.m.



**VALLEY WOMEN AND CHILDREN'S SHELTER**  
869 W. Corporate Ln., Nampa  
(208) 475-0725 ▪ [BoiseRM.org](http://BoiseRM.org)



### SERVICES OFFERED FOR WOMEN & CHILDREN

- Hot meals
- Safe, secure overnight shelter
- Clothing & shoes
- Case management
- And more!

★ If you need help, prayer, have a question, or need a referral, please don't hesitate to ask.

## We Are Here to Help!

(Women & children only)

### MEAL TIMES

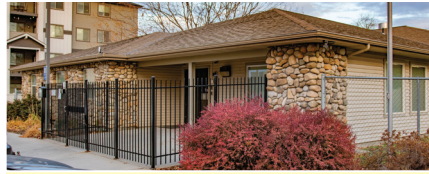
**Breakfast** – overnight guests only  
6:00 a.m. (Daily)

**Lunch** – overnight guests only  
12:00 p.m.

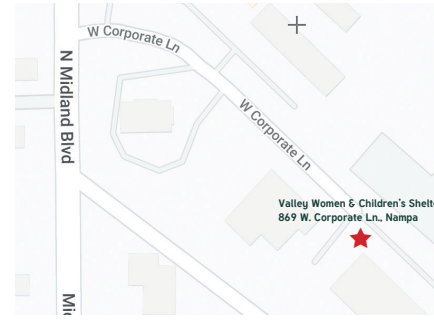
**Dinner** – 6:00 p.m.

### OVERNIGHT SHELTER

**Check in** – 4:00 p.m.



**VALLEY WOMEN AND CHILDREN'S SHELTER**  
869 W. Corporate Ln., Nampa  
(208) 475-0725 ▪ [BoiseRM.org](http://BoiseRM.org)



### SERVICES OFFERED FOR WOMEN & CHILDREN

- Hot meals
- Safe, secure overnight shelter
- Clothing & shoes
- Case management
- And more!

★ If you need help, prayer, have a question, or need a referral, please don't hesitate to ask.

## We Are Here to Help!

(Women & children only)

### MEAL TIMES

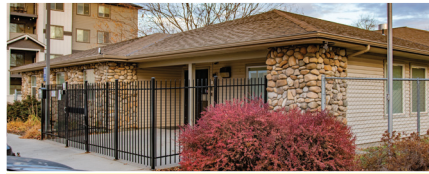
**Breakfast** – overnight guests only  
6:00 a.m. (Daily)

**Lunch** – overnight guests only  
12:00 p.m.

**Dinner** – 6:00 p.m.

### OVERNIGHT SHELTER

**Check in** – 4:00 p.m.



**VALLEY WOMEN AND CHILDREN'S SHELTER**  
869 W. Corporate Ln., Nampa  
(208) 475-0725 ▪ [BoiseRM.org](http://BoiseRM.org)



### SERVICES OFFERED FOR WOMEN & CHILDREN

- Hot meals
- Safe, secure overnight shelter
- Clothing & shoes
- Case management
- And more!

★ If you need help, prayer, have a question, or need a referral, please don't hesitate to ask.

## We Are Here to Help!

(Women & children only)

### MEAL TIMES

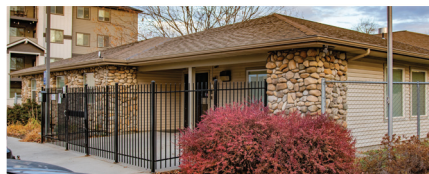
**Breakfast** – overnight guests only  
6:00 a.m. (Daily)

**Lunch** – overnight guests only  
12:00 p.m.

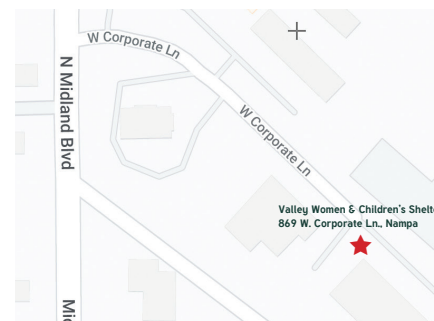
**Dinner** – 6:00 p.m.

### OVERNIGHT SHELTER

**Check in** – 4:00 p.m.



**VALLEY WOMEN AND CHILDREN'S SHELTER**  
869 W. Corporate Ln., Nampa  
(208) 475-0725 ▪ [BoiseRM.org](http://BoiseRM.org)



### SERVICES OFFERED FOR WOMEN & CHILDREN

- Hot meals
- Safe, secure overnight shelter
- Clothing & shoes
- Case management
- And more!

★ If you need help, prayer, have a question, or need a referral, please don't hesitate to ask.

## We Are Here to Help!

(Women & children only)

### MEAL TIMES

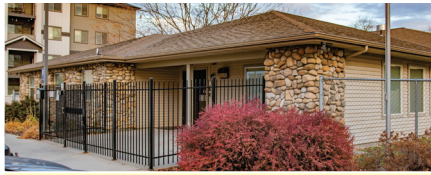
**Breakfast** – overnight guests only  
6:00 a.m. (Daily)

**Lunch** – overnight guests only  
12:00 p.m.

**Dinner** – 6:00 p.m.

### OVERNIGHT SHELTER

**Check in** – 4:00 p.m.



**VALLEY WOMEN AND CHILDREN'S SHELTER**  
869 W. Corporate Ln., Nampa  
(208) 475-0725 ▪ [BoiseRM.org](http://BoiseRM.org)



### SERVICES OFFERED FOR WOMEN & CHILDREN

- Hot meals
- Safe, secure overnight shelter
- Clothing & shoes
- Case management
- And more!

★ If you need help, prayer, have a question, or need a referral, please don't hesitate to ask.

## We Are Here to Help!

(Women & children only)

### MEAL TIMES

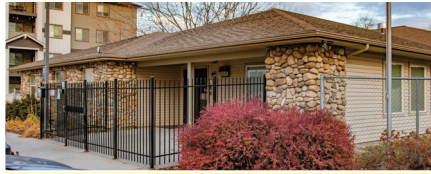
**Breakfast** – overnight guests only  
6:00 a.m. (Daily)

**Lunch** – overnight guests only  
12:00 p.m.

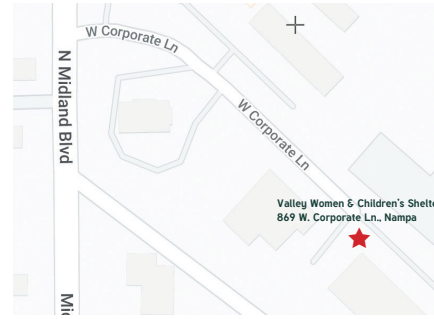
**Dinner** – 6:00 p.m.

### OVERNIGHT SHELTER

**Check in** – 4:00 p.m.



**VALLEY WOMEN AND CHILDREN'S SHELTER**  
869 W. Corporate Ln., Nampa  
(208) 475-0725 ▪ [BoiseRM.org](http://BoiseRM.org)



### SERVICES OFFERED FOR WOMEN & CHILDREN

- Hot meals
- Safe, secure overnight shelter
- Clothing & shoes
- Case management
- And more!

★ If you need help, prayer, have a question, or need a referral, please don't hesitate to ask.

## We Are Here to Help!

(Women & children only)

### MEAL TIMES

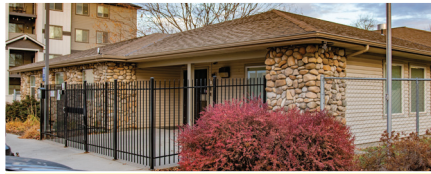
**Breakfast** – overnight guests only  
6:00 a.m. (Daily)

**Lunch** – overnight guests only  
12:00 p.m.

**Dinner** – 6:00 p.m.

### OVERNIGHT SHELTER

**Check in** – 4:00 p.m.



**VALLEY WOMEN AND CHILDREN'S SHELTER**  
869 W. Corporate Ln., Nampa  
(208) 475-0725 ▪ [BoiseRM.org](http://BoiseRM.org)



### SERVICES OFFERED FOR WOMEN & CHILDREN

- Hot meals
- Safe, secure overnight shelter
- Clothing & shoes
- Case management
- And more!

★ If you need help, prayer, have a question, or need a referral, please don't hesitate to ask.

## We Are Here to Help!

(Women & children only)

### MEAL TIMES

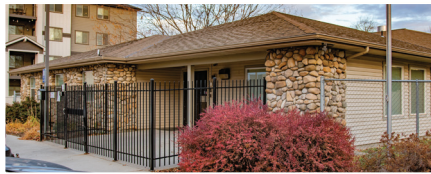
**Breakfast** – overnight guests only  
6:00 a.m. (Daily)

**Lunch** – overnight guests only  
12:00 p.m.

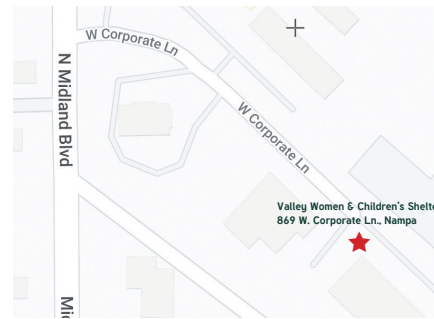
**Dinner** – 6:00 p.m.

### OVERNIGHT SHELTER

**Check in** – 4:00 p.m.



**VALLEY WOMEN AND CHILDREN'S SHELTER**  
869 W. Corporate Ln., Nampa  
(208) 475-0725 ▪ [BoiseRM.org](http://BoiseRM.org)



### SERVICES OFFERED FOR WOMEN & CHILDREN

- Hot meals
- Safe, secure overnight shelter
- Clothing & shoes
- Case management
- And more!

★ If you need help, prayer, have a question, or need a referral, please don't hesitate to ask.